



How to Register an EZCloud Account and Add Devices on UNV-Link?

Title	How to Register An EZCloud Account and Add Devices on UNV-Link?	Version:	V1.0
Product	SMB	Date	7/15/2024

How to Register an EZCloud Account and Add Devices on UNV-Link?

Description

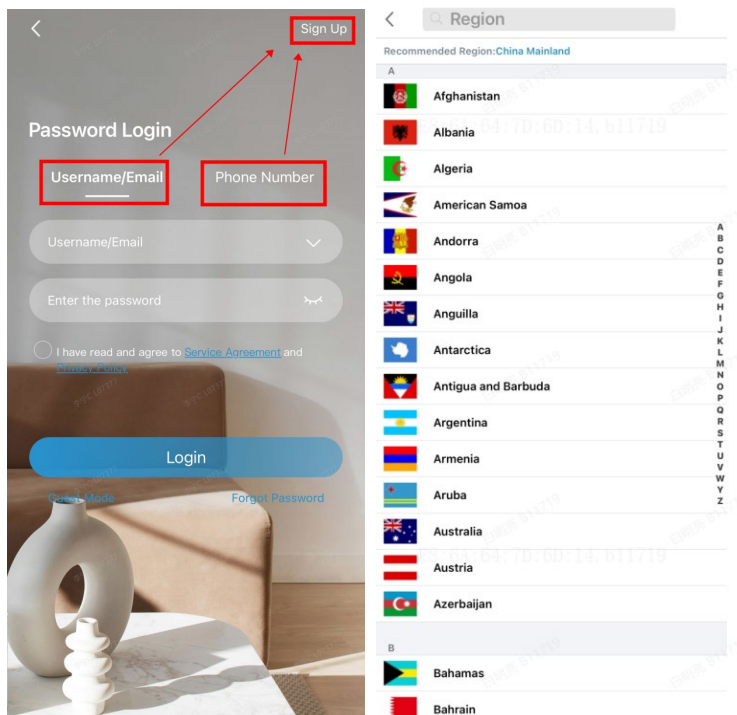
Note: This method is applicable in most scenarios. If this method does not solve your problem, it is recommended to consult our Tech Support Team.

https://global.uniview.com/Support/Service_Hotline/

Operating Steps

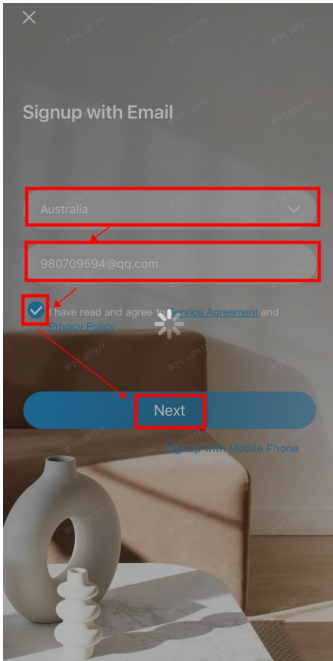
Sign up an account on UNV-Link

Step 1 Open UNV-Link and go to the login page. Select if you want to sign up by using Username/Email or phone number, and then click **Sign up**. Here we will take the Email as an example.

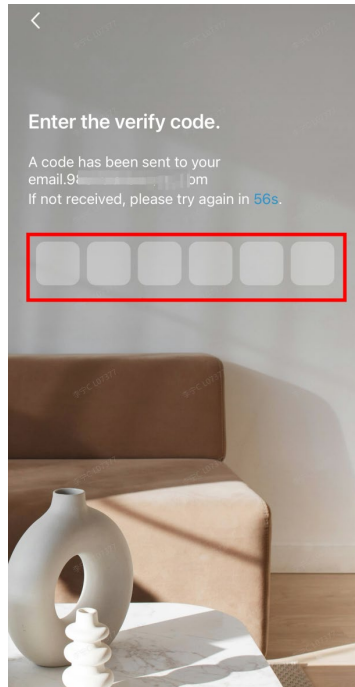
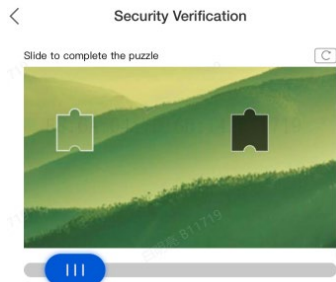


Step 2 Select region, and type in your Email address, then click on **Next**.

Title	How to Register An EZCloud Account and Add Devices on UNV-Link?	Version:	V1.0
Product	SMB	Date	7/15/2024

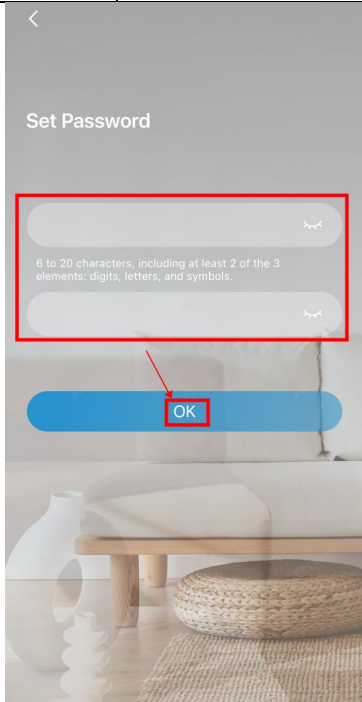


Step 3 Slide to complete the puzzle to finish the Security Verification. Then a verification code will be sent to the Email address you typed in in step 2, Please type in the verification code in the **Enter the verify code** page.



Step 4 Set password for the EZCloud account, and then click **OK**.

Title	How to Register An EZCloud Account and Add Devices on UNV-Link?	Version:	V1.0
Product	SMB	Date	7/15/2024



Til now, the EZCloud account has been signed up successfully.

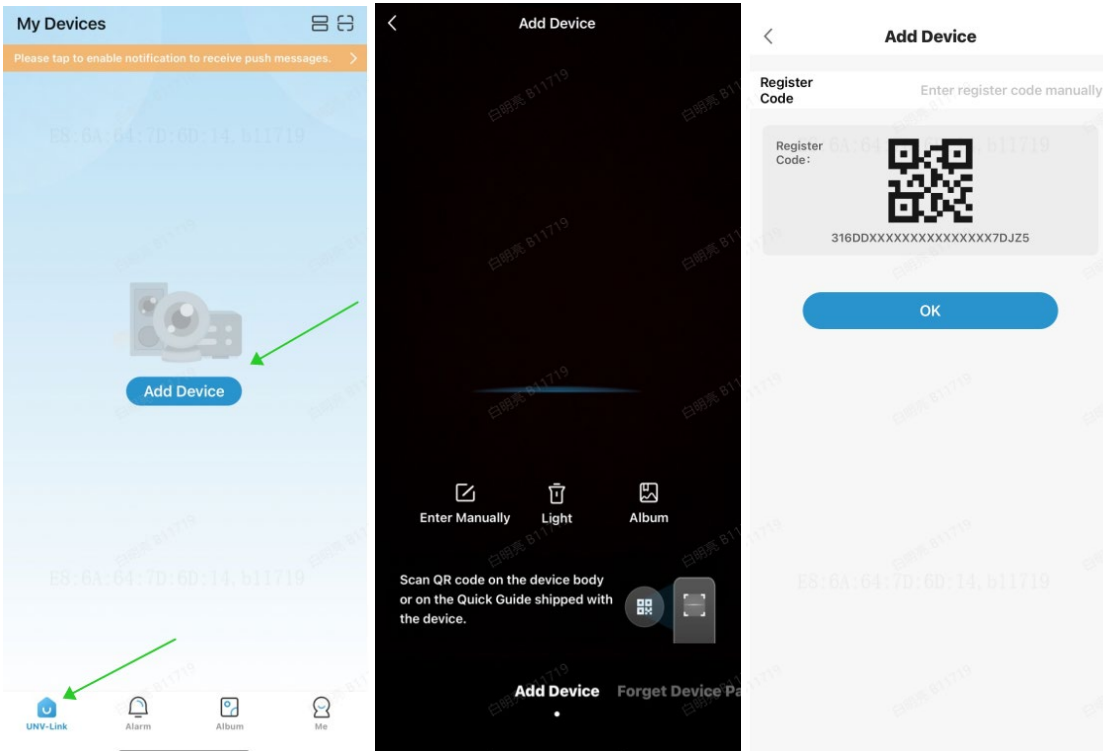
Note:

1. The region is where you use the cloud service regularly. It cannot be changed once sign-up is complete.
2. You can choose to sign up using email or mobile phone number. The email address or the mobile phone number will be used to retrieve the passwords of your account and your devices.

Add device on UNV-Link

Step 1 After logging into UNV-LINK with your EZCloud account, you can click **UNV-Link** at the left bottom corner and then click **Add Device** to add new devices (take scan for example here). You can scan the QR code from NVR's EZCloud page on the NVR monitor.

Title	How to Register An EZCloud Account and Add Devices on UNV-Link?	Version:	V1.0
Product	SMB	Date	7/15/2024



Step 2 Most of the device need to use cable connection, if the device is not a Wi-Fi device, please select the **Cable Connection**, then input a device name, click **Ok**.

